

# 2015 STAR Summit



## The Journey Home

*Building Bridges &  
Mending Fences*

“We all want to **fix** things. Just as we all believe that so much in life can be rectified. **Mend** fences, **build** bridges, reach out, *engage* in mutual healing.”

- Douglas Kennedy, *Leaving the World*



Wednesday, March 18, 2015  
St. Louis Community College-Florissant Valley

# 2015 Summit Schedule

- 8:00 am**                      **Registration & Coffee**
- 8:30 am**                      **Welcome Remarks**
- Segun Babalola, Empowerment Specialist, St. Louis County
  - Eddie Roth, Director of Human Services, City of St. Louis
  - Wendell E. Kimbrough, Chief Executive Officer, ARCHS
- 8:45 am**                      **STAR Overview & Updates**
- Nancy Mitchell McCarthy, Regional Administrator, Missouri Division of Probation and Parole (STAR Co-Chair)
  - Les Johnson, Vice President, ARCHS (STAR Co-Chair)
  - Andrea Mayrose, Outreach Manager, Gateway Greening and Chris Deason, Client Services Director, Center for Women in Transition (STAR Research Committee Co-Chairs)
- 9:15 am**                      **Morning Session I:**  
*The Social, Emotional, and Economic Implications of Returning Home*
- Dr. Carrie Pettus-Davis, Washington University in St. Louis, George Warren Brown School of Social Work
  - Andrea Mayrose, Volunteer and Outreach Manager, Gateway Greening, STAR Research Committee Co-Chair (Moderator)
- 10:15 am**                      **Break & Networking**
- 10:30 am**                      **Morning Session II:**  
*From Institution to Community: The Pre-Release Process*
- Joan Sanford, District Administrator II, Missouri Division of Probation and Parole
  - Sonya Engelking, Sex Offender Officer, Missouri Division of Probation and Parole
  - Denise Weaver, Business Manager, Missouri Eastern Correctional Center, Missouri Department of Corrections
  - Jennifer Sachse, Warden, Missouri Department of Corrections, STAR Steering Committee Member (Moderator)
- 11:45 am**                      **Lunch & Greetings**
- Ruby Curry, Interim President, St. Louis Community College-Florissant Valley
  - Ellis McSwain, Jr., Chairman, Missouri Board of Probation and Parole

- 12:30 pm**                    **Keynote Presentation:**
- Eugene Schneeberg, Director, Center for Faith-based and Neighborhood Partnerships, U.S. Department of Justice
  - *Les Johnson, Vice President, ARCHS, STAR Co-Chair (Moderator)*
- 1:15 pm**                    **Break & Networking**
- 1:30-2:30 pm**            **Afternoon Session 1:**  
*Forensic Assertive Community Treatment*
- Dr. Gary Morse, Associate Executive Director, Places for People
  - Katie Thumann, FACT Team Leader, Places for People
  - *Joe Yancey, Executive Director, Places for People, STAR Steering Committee Member (Moderator)*
- 2:30 pm**                    **Break & Networking**
- 2:45-3:45 pm**            **Afternoon Session 2:**  
*Identifying and Understanding the Impact of Trauma*
- Dr. Rachel Wamser-Nanney, Children's Advocacy Services of Greater St. Louis, University of Missouri-St. Louis
  - *Heidi Moore, Coordinator, Release to Rent and Project Re-Connect, STAR Community Awareness Committee Co-Chair (Moderator)*
- 4:00 pm**                    **Closing Remarks & Networking/Business Card Exchange**
- Melinda McAliney, Program Director, Lutheran Foundation of St. Louis (STAR Steering Committee Member)



# Keynote Speaker

## Eugene Schneeberg

### Director, Center for Faith-based and Neighborhood Partnerships

#### U.S. Department of Justice

Eugene Schneeberg is the Director of the Center for Faith-based and Neighborhood Partnerships for the U.S. Department of Justice.

In this capacity he helps coordinate between the White House and the Department of Justice's efforts to outreach and partner with faith-based and other not-for-profit organizations around the country.

Under his leadership, the Center for Faith-based and Neighborhood Partnerships at the Department of Justice works to advance the goals of the President's National Fatherhood and Mentoring Initiative, assists in the coordination of the National Forum on Youth Violence Prevention, and serves on the Federal Interagency Reentry Council.

Schneeberg came to the Obama Administration after working for almost a decade as the Director of Operations for Straight Ahead Ministries, a national faith-based juvenile justice not-for-profit organization in Boston, MA.

He earned his undergraduate degree in Urban Affairs from Boston University. Eugene was raised in Roxbury, MA. He and his wife, Deitra, have two sons, Eugene Jr. and Elijah, and one daughter, Genesis.



# STAR History & Background

- **About:** STAR is an alliance of community stakeholders that includes health and human services providers, criminal justice professionals, government officials, business leaders, and community leaders who are committed to reducing recidivism in St. Louis City and County by assisting ex-offenders in becoming productive, responsible citizens.
- **Mission:** To integrate successful intervention principles and practices resulting in collaborative partnerships that enhance ex-offender self-sufficiency, reduce recidivism, and improve public safety and community health in St. Louis City and County.
- **Definition of Reentry:** A process of promoting public safety, individual self-sufficiency, and restorative practices by utilizing comprehensive programs, initiatives, and partnerships beginning at pre-trial and continuing through community reintegration. STAR is focused on increasing community safety through individual success.
- **History:** In 2005, Missouri created the statewide Missouri Reentry Process (MRP). MRP allows state agencies the opportunity to address the barriers within their departments and work in a collaborative effort to increase offender success. Local reentry work groups were created across the state in 2006. In 2010, St. Louis' MRP work group was reorganized and named *St. Louis Alliance for Reentry* (STAR).
- **Structure:** STAR is comprised of a volunteer steering committee and subcommittees that address regional reentry issues. Area Resources for Community and Human Services (ARCHS) provides STAR with strategic services and staffing with support from Missouri Department of Corrections, Lutheran Foundation of St. Louis, and area community and faith-based organizations.
- **Awards:** STAR's efforts have been recognized with a *2013 What's Right with the Region Award* from FOCUS St. Louis and a *2014 Restorative Justice Award* from the Center for Women in Transition.
- **STATS:** Missouri Department of Corrections (MDOC) is responsible for over 100,000 persons – 30,000 in state correctional facilities and another 70,000 on probation or parole. More than 20,000 of these offenders return to communities across Missouri each year.

## For more information:

[www.stlreentry.org](http://www.stlreentry.org)

314-534-0022 and [info@stlreentry.org](mailto:info@stlreentry.org)

Social Media: Facebook/Twitter (stlreentry)

## STAR Co-Chairs:

- Nancy Mitchell McCarthy, Regional Administrator, Missouri Probation and Parole
- Les Johnson, Vice President, ARCHS

## STAR Steering Committee:

ARCHS, Catholic Charities, Office of U.S. Congressman Wm. "Lacy" Clay, City of St. Louis, City of St. Louis Family Court, Criminal Justice Ministry, Ethics Project, Harris-Stowe State University, Lutheran Foundation of St. Louis, State of Missouri Departments of Corrections, Mental Health, and Social Services, Places for People, Provident, Inc., Saint Louis University, University of Missouri-St. Louis, St. Louis County, U.S. Probation, U.S. Veterans Administration, and Washington University in St. Louis.

## STAR Subcommittees:

### Research

- White Papers
- Trend Analysis
- Data/Best Practice Sharing

### Professional Development

- Annual Summit (March)
- Workshops (Spring/Fall)
- Networking Opportunities

### Community Awareness

- New Member Orientation
- Presentations
- Website and Social Media

# STAR Committees

STAR welcomes and actively promotes involvement in the strategic coordination and sharing of resources to enhance reentry programming in Greater St. Louis.

## Research Committee:

*Goal: Identify and share evidence-based, best, and promising practices via white papers and other research methods.*

Co-Chairs: Annie Mayrose, Gateway Greening and Chris Deason, Center for Women in Transition

Meetings: October, December, February, April, June, August (every second Thursday), 9-10:30am, Probation and Parole (3101 Chouteau, St. Louis, MO 63103)

## Community Awareness Committee:

*Goal: Educate stakeholders and the community at large on issues, opportunities, policies, and practices that lead to the success of ex-offenders.*

Co-Chairs: John Buck, MO Probation and Parole and Heidi Moore, Criminal Justice Ministry

Meetings: October, December, February, April, June, August (Every third Wednesday), 2pm, Employment Connection (2838 Market Street, St. Louis, MO 63103)

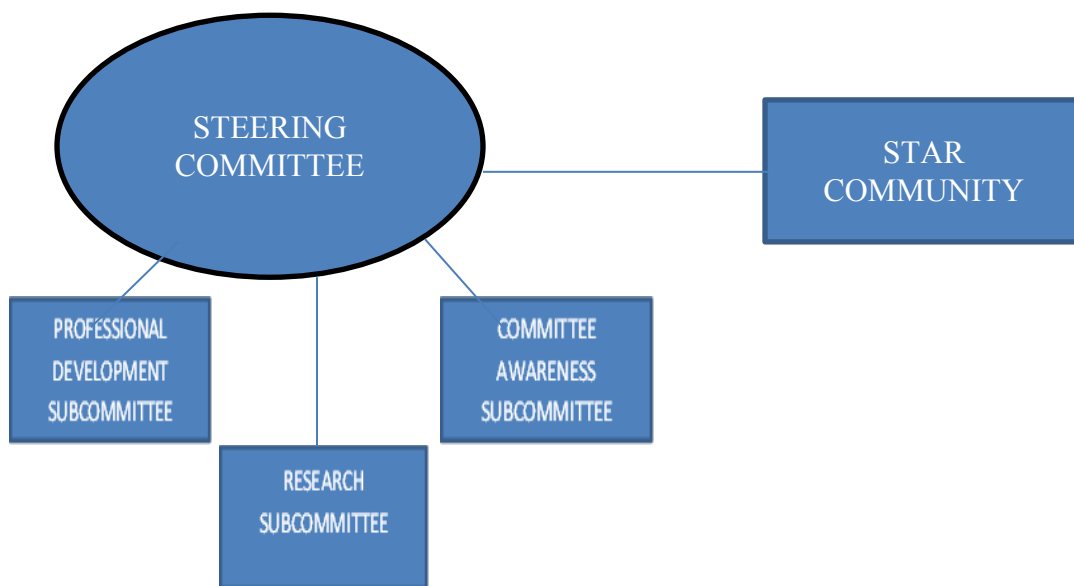
## Professional Development Committee:

*Goal: Host annual Summit and on-going professional trainings for those who serve the offender community.*

Co-Chairs: Jennifer Myrick, MO Probation and Parole and Les Johnson, ARCHS

Meetings: December, February, April, June, August (every first Friday), 9-10:30am, ARCHS (539 North Grand Ave, St. Louis, MO 63103)

## STAR STRUCTURE



# STAR Steering Committee

## Co-Chairs:

Nancy McCarthy, MO Dept. Corrections, Division of Probation & Parole

Les Johnson, ARCHS

## Members:

Lou Aboussie, Office of U.S. Congressman William  
"Lacy" Clay

Lynne Allar-Meine, MO Dept. of Mental Health

Herb Bernsen, St. Louis County, Dept. of Justice  
Services

John Buck, MO Division of Probation & Parole

Jo Cooper, U.S. Probation, Eastern District of MO

Robert Crecilius, City of St. Louis, Dept. of Human  
Services

Chris Deason, Center for Women in Transition

Stacy Fowler, SLATE

Dr. Jim Gilsinan, Saint Louis University, Dept. of  
Political Science

Christi Griffin, Ethics Project

Marcena Gunter, U.S. Veterans Administration

Cathy Horejas, St. Louis Municipal Family Courts

Dr. Beth Huebner, University of Missouri- St. Louis,  
Dept. of Criminology & Criminal Justice

Dr. John David Kerr, Harris-Stowe State University,  
Dept. of Business Administration

David Kessel, Employment Connection

Andrea Mayrose, Gateway Greening

Melinda McAliney, Lutheran Foundation  
of St. Louis

Julie McDowell, Provident, Inc.

Heidi Moore, Criminal Justice Ministry

Melba Moore, City of St. Louis, Dept. of  
Health

Jennifer Myrick, MO Dept. of Corrections

Dr. Carrie Pettus-Davis, Washington  
University in St. Louis, George Warren  
Brown School of Social Work

Carleen Reck, SSND, Criminal Justice  
Ministry

Jennifer Sachs, MO Dept. of Corrections

Marge Schicker, Provident, Inc.

Bill Siedhoff, City of St. Louis, Dept. of  
Human Services (retired)

Cassie Strom, Catholic Charities

Joe Yancey, Places for People

## For more information:

[www.stlreentry.org](http://www.stlreentry.org)

314-534-0022 and [info@stlreentry.org](mailto:info@stlreentry.org)

Social Media: Facebook/Twitter ([stlreentry](https://www.facebook.com/stlreentry))





# 2015 Summit Sponsors



Lutheran Foundation  
OF ST. LOUIS

*Christian support that heals lives and the community*

