

# 2016 STAR Summit

Young Offenders & Reentry

*Connecting the Dots...*



Tuesday, March 15, 2016

St. Louis Community College-Florissant Valley



# 2016 STAR Summit

## Young Offenders & Reentry...

### *Connecting the Dots*



## Agenda

- 8:00 am Registration
- 8:30 am Welcome Remarks
- 8:45 am STAR Overview & Updates
- 9:15 am Morning Session I: *Young Offenders & Reentry...Connecting the Dots*, Norm White, Ph.D., Director of Criminal Justice Programs and Assistant Professor, St. Louis University
- 10:15 am Break & Networking
- 10:30 am Morning Session II: *Strengths-Based Approach*, Bob Matichek, St. Louis City Drug Court, Treatment Coordinator
- 11:45 am Lunch
- 12:30 pm Lunch Presentation: *ACT Missouri*, Chuck Daugherty, MHD, SAPA, Executive Director
- 1:15 pm Break & Networking
- 1:30 pm Afternoon Session I: *Exploring What Works*, Missouri Division of Youth Services
- 2:30 pm Break & Networking
- 2:45 pm Afternoon Session II: (TBA)
- 4:00 pm Closing Remarks & Networking/Business Card Exchange

# STAR History & Background

- **About:** STAR is an alliance of community stakeholders that includes health and human services providers, criminal justice professionals, government officials, business leaders, and community leaders who are committed to reducing recidivism in St. Louis City and County by assisting ex-offenders in becoming productive, responsible citizens.
- **Mission:** To integrate successful intervention principles and practices resulting in collaborative partnerships that enhance ex-offender self-sufficiency, reduce recidivism, and improve public safety and community health in St. Louis City and County.
- **Definition of Reentry:** A process of promoting public safety, individual self-sufficiency, and restorative practices by utilizing comprehensive programs, initiatives, and partnerships beginning at pre-trial and continuing through community reintegration. STAR is focused on increasing community safety through individual success.
- **History:** In 2005, Missouri created the statewide Missouri Reentry Process (MRP). MRP allows state agencies the opportunity to address the barriers within their departments and work in a collaborative effort to increase offender success. Local reentry work groups were created across the state in 2006. In 2010, St. Louis' MRP work group was reorganized and named *St. Louis Alliance for Reentry* (STAR).
- **Structure:** STAR is comprised of a volunteer steering committee and subcommittees that address regional reentry issues. Area Resources for Community and Human Services (ARCHS) provides STAR with strategic services and staffing with support from Missouri Department of Corrections, Lutheran Foundation of St. Louis, and area community and faith-based organizations.
- **Awards:** STAR's efforts have been recognized with a *2013 What's Right with the Region Award* from FOCUS St. Louis and a *2014 Restorative Justice Award* from the Center for Women in Transition.
- **STATS:** Missouri Department of Corrections (MDOC) is responsible for over 100,000 persons - 31,000 in state correctional facilities and another 62,000 on probation or parole. More than 20,000 of these offenders return to communities across Missouri each year.

## For more information:

[www.stlreentry.org](http://www.stlreentry.org)

314-534-0022 and [info@stlreentry.org](mailto:info@stlreentry.org)

Social Media: Facebook/Twitter ([stlreentry](#))

## STAR Co-Chairs:

- Nancy McCarthy, Regional Administrator, Missouri Probation and Parole
- Les Johnson, Vice President, ARCHS

## STAR Steering Committee:

ARCHS, Catholic Charities, Concordance, Catholic Charities, City of St. Louis, City of St. Louis Family Court, Criminal Justice Ministry, Employment Connection, Harris-Stowe State University, Lutheran Foundation of St. Louis, St. Louis Agency on Training and Employment, State of Missouri Departments of Corrections, Mental Health, and Social Services, Places for People, Provident, Inc., Saint Louis University, University of Missouri-St. Louis, St. Louis County, U.S District Court. U.S. Probation, U.S. Veterans Administration, and Washington University in St. Louis.

## STAR Subcommittees:

### Research

- White Papers
- Trend Analysis
- Data/Best Practice Sharing

### Professional Development

- Annual Summit (March)
- Workshops (Spring/Fall)
- Networking Opportunities

### Community Awareness

- New Member Orientation
- Presentations
- Website and Social Media

# STAR Committees

STAR welcomes and actively promotes involvement in the strategic coordination and sharing of resources to enhance reentry programming in Greater St. Louis.

## Research Committee:

*Goal: Identify and share evidence-based, best, and promising practices via white papers and other research methods.*

Co-Chairs: Leeland Smith, Probation and Parole, and Morgan McGuirk, Research Intern.

Meetings: December, February, April, June, August, October (Second Thursday), 9-10:30am, Meeting location changes monthly.

## Community Awareness Committee:

*Goal: Educate stakeholders and the community at large on issues, opportunities, policies, and practices that lead to the success of ex-offenders.*

Co-Chairs: John Buck, MO Probation and Parole and Niadu Allen, Deliberately Chosen Ministries

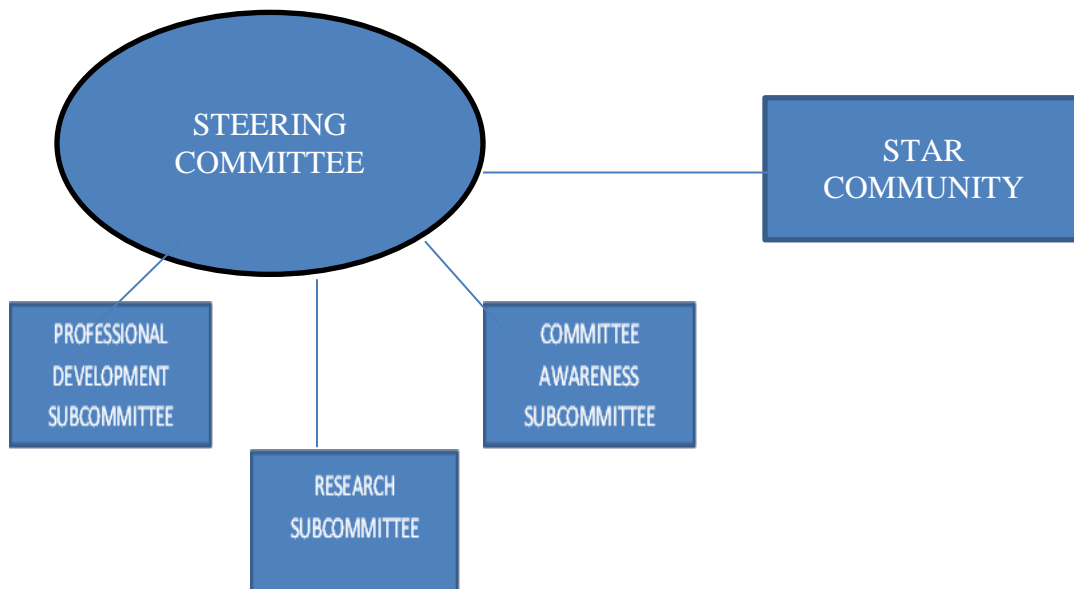
Meetings: , December, February, April, June, August, October (Third Wednesday), 2pm, Employment Connection (2838 Market Street, St. Louis, MO 63103)

## Professional Development Committee:

*Goal: Host annual Summit and on-going professional trainings for those who serve the offender community.*

Co-Chairs: Jennifer Myrick, MO Probation and Parole and Les Johnson, ARCHS

Meetings: December, February, April, June, August, October (First Friday), 10-11:30am, ARCHS (539 North Grand Ave, St. Louis, MO 63103)



# STAR Steering Committee

## Co-Chairs:

- Nancy McCarthy, MO Dept. Corrections, Division of Probation & Parole
- Les Johnson, ARCHS

## Members:

Lynne Allar-Meine, MO Dept. of Mental Health

Herb Bernsen, St. Louis County, Dept. of Justice Services

John Buck, MO Division of Probation & Parole

Jo Cooper, U.S. Probation, Eastern District of MO

Robert Crecilius, City of St. Louis, Dept. of Human Services

Stacy Fowler, SLATE

Dr. Jim Gilsinan, Saint Louis University, Dept. of Political Science

Susan Hendrickson, U.S. District Court, Eastern District of Missouri

Marcena Gunter, U.S. Veterans Administration

Cathy Hoerjes, St. Louis Municipal Family Courts

Dr. Beth Huebner, University of Missouri- St. Louis, Dept. of Criminology & Criminal Justice

Dr. John David Kerr, Harris-Stowe State University, Dept. of Business Administration

Danny Ludeman, Concordance Academy

Brenda Mahr, Employment Connection

Melinda McAliney, Lutheran Foundation of St. Louis

Julie McDowell, Provident, Inc.

Melba Moore, City of St. Louis, Dept. of Health

Jennifer Myrick, MO Dept. of Corrections

Dr. Carrie Pettus-Davis, Washington University in St. Louis, George Warren Brown School of Social Work

Carleen Reck, SSND, Criminal Justice Ministry

Jennifer Sachs, MO Dept. of Corrections

Marge Schicker, Provident, Inc.

Bill Siedhoff, City of St. Louis, Dept. of Human Services (retired)

Cassie Strom, Catholic Charities

Joe Yancey, Places for People

## For more information:

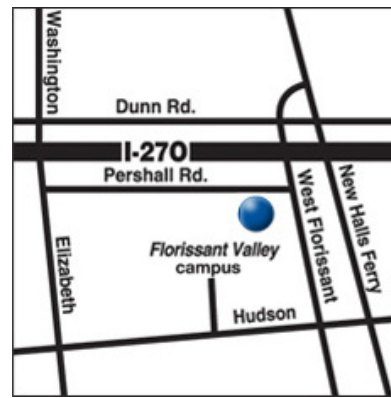
[www.stlreentry.org](http://www.stlreentry.org)

314-534-0022 and [info@stlreentry.org](mailto:info@stlreentry.org)

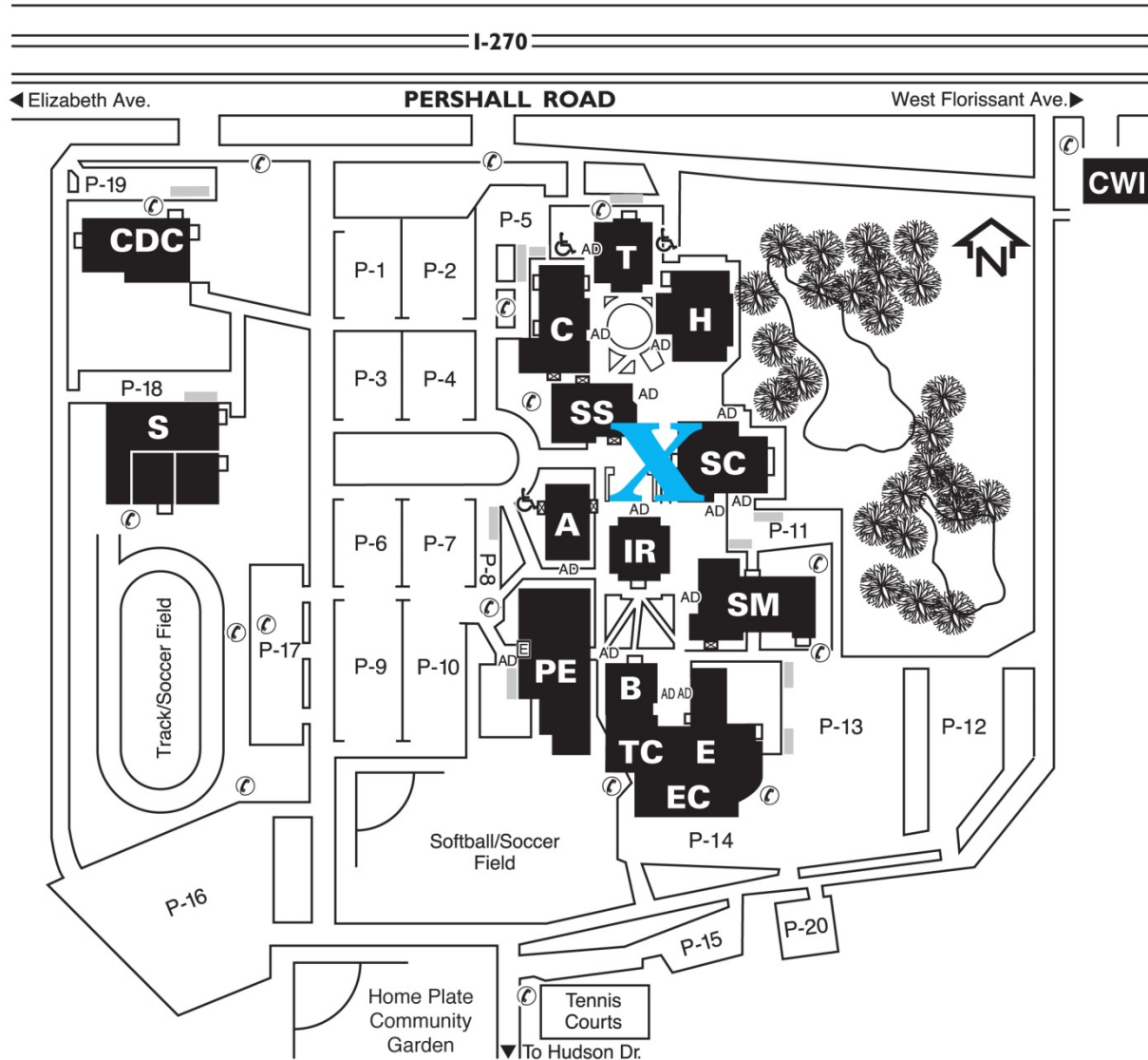
Social Media: Facebook/Twitter ([stlreentry](https://www.facebook.com/stlreentry))



# Directions/Map



## STLCC FLORISSANT VALLEY CAMPUS



- |                          |  |                                   |
|--------------------------|--|-----------------------------------|
| <b>AD</b> Automatic Door | <b>A</b> Administration                    | <b>IR</b> Instructional Resources |
| Non-Automatic Door       | <b>B</b> Business                          | <b>PE</b> Physical Education      |
| Non-Accessible Door      | <b>CWI</b> Center for Workforce Innovation | <b>S</b> Service Building         |
| <b>R</b> Ramp            | <b>CDC</b> Child Development Center        | <b>SM</b> Science-Mathematics     |
| Ramp Accessible Route    | <b>C</b> Communications                    | <b>SS</b> Social Sciences         |
| Accessible Parking       | <b>EC</b> Emerson Center                   | <b>SC</b> Student Center          |
| Emergency Call Boxes     | <b>E</b> Engineering                       | <b>T</b> Theatre                  |
| Elevator                 | <b>H</b> Humanities                        | <b>TC</b> Training Center         |

3400 Pershall Road • St. Louis, MO 63135 • 314-513-4200

# 2016 Summit Sponsors



Lutheran Foundation  
OF ST. LOUIS

*Christian support that heals lives and the community*



St. Louis  
Community  
College



Washington  
University in St. Louis

